

LANmark Zone Distribution Boxes

LANmark ZD box 12 Snap-In White

Contact

LAN Systems (Nexans Cabling Solutions)
Phone: +44 (0)1256 486640
ncs.uk@nexans.com

Nexans ref.: [N521.600](#)

- For use as consolidation point.
- Compatible with all LANmark snap-in connectors.
- 12 numbered snap-in ports with shutters.
- Pre-Perforated openings for cable entry.
- Easy to install.

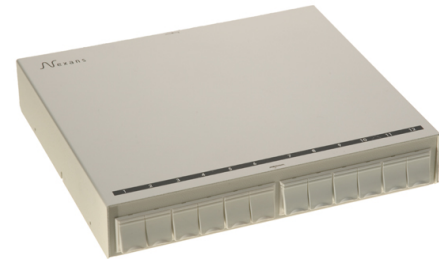
DESCRIPTION

Designed for use as consolidation points, zone distribution boxes significantly improve the flexibility of desk locations in open office environments. They are particularly useful in offices where frequent relocation of outlets in the work area is required.

Nexans 12 port ZD box is easy to install on walls, under raised floors or in ceiling voids, due to their multiple mounting features.

The ZD box is compatible with all LANmark snap-in connectors, which can be easily inserted by a simple "one-click" movement.

- 12 numbered ports with shutters.
- compatible with all LANmark snap-in connectors.
- earthing and mass contact features.
- cable entry points at the back and underneath.
- tie-wrap holes for cable fixing.
- foam protection against dust entry.
- multiple mounting features.



LANmark Zone Distribution Boxes

LANmark ZD box 12 Snap-In White

Contact

LAN Systems (Nexans Cabling Solutions)
Phone: +44 (0)1256 486640
ncs.uk@nexans.com

CHARACTERISTICS

Construction characteristics

Material	Steel
Colour	White RAL 9002

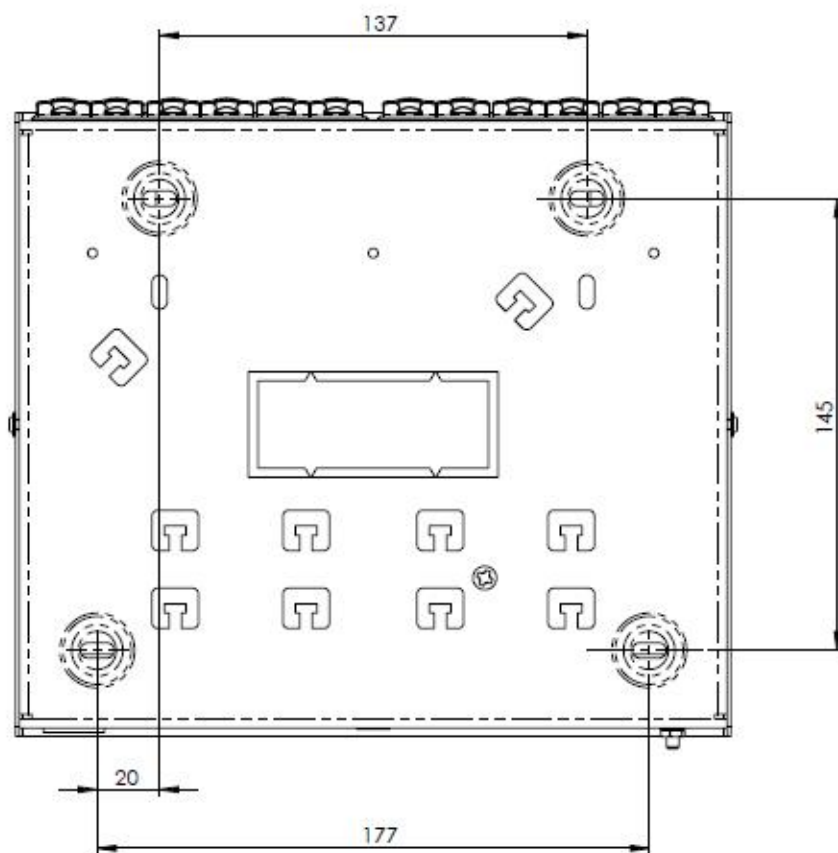
Dimensional characteristics

Approximate weight per piece	1.25 kg
Depth	200 mm
Height	45 mm
Width	230 mm

Usage characteristics

Number of ports	12
Field of application	Fixed installations

MOUNTING DIMENSIONS 12 PORT ZD BOX



All drawings, designs, specifications, plans and particulars of weights, size and dimensions contained in the technical or commercial documentation of Nexans is indicative only and shall not be binding on Nexans or be treated as constituting a representation on the part of Nexans.

Generated 30/11/17 www.nexans.co.uk Page 2 / 2