

LANmark-OF Plug&Play Adapter Plates

LANmark-OF Adaptor Plate 24 LC Singlemode Blue

Contact

LAN Systems (Nexans Cabling Solutions)
Phone: +44 (0)1256 486640
ncs.uk@nexans.com

Nexans ref.: [N205.ALC24SMB](#)

- Adapter plates for 3DSC, 6DSC, 6DLC or 12DLC
- Available in multimode and singlemode
- Module can be easily mounted into Nexans' Plug&Play patch panel
- High density: 4 modules fit into 1U

DESCRIPTION

Application

The adaptor plates are designed for a fast installation inside the Nexans Plug&Play panels. They allow a wide range of connectivity options. A mix of different adaptor types and a combination of singlemode and multimode within the same panel is possible.

Compatibility

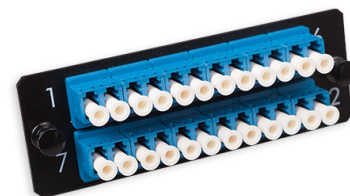
The adapter plates are installed in the LANmark-OF Plug&Play Patch panels (N439.3MPP). Up to 4 adapters plates can be installed into one patch panel.

Adapter plate versions.

The adapter plates are available with a density of 3DSC, 6DSC, 6DLC or 12DLC. This results in a medium density of 48SC/48LC or a high density of 96 LC in one patch panel.

The adapter plates are available for multimode and singlemode.

Blank adapter plates reserve fibre space for future use.



LANmark-OF

STANDARDS

International ISO/IEC 11801

CHARACTERISTICS

Construction characteristics

Connector type	LC
Fiber optic type	SingleMode 9/125
Colour	Blue

All drawings, designs, specifications, plans and particulars of weights, size and dimensions contained in the technical or commercial documentation of Nexans is indicative only and shall not be binding on Nexans or be treated as constituting a representation on the part of Nexans.

Generated 10/10/17 www.nexans.co.uk Page 1 / 1

